

по вопросам продаж и поддержки обращайтесь:

Архангельск (8182)63-90-72 Астана +7(7172)727-132 Белгород (4722)40-23-64 Брянск (4832)59-03-52  
Владивосток (423)249-28-31 Волгоград (844)278-03-48 Вологда (8172)26-41-59 Воронеж (473)204-51-73  
Екатеринбург (343)384-55-89 Иваново (4932)77-34-06 Ижевск (3412)26-03-58 Казань (843)206-01-48  
Калининград (4012)72-03-81 Калуга (4842)92-23-67 Кемерово (3842)65-04-62 Киров (8332)68-02-04  
Краснодар (861)203-40-90 Красноярск (391)204-63-61 Курск (4712)77-13-04 Липецк (4742)52-20-81  
Магнитогорск (3519)55-03-13 Москва (495)268-04-70 Мурманск (8152)59-64-93 Набережные Челны (8552)20-53-41  
Нижний Новгород (831)429-08-12 Новокузнецк (3843)20-46-81 Новосибирск (383)227-86-73 Орел (4862)44-53-42  
Оренбург (3532)37-68-04 Пенза (8412)22-31-16 Пермь (342)205-81-47 Ростов-на-Дону (863)308-18-15  
Рязань (4912)46-61-64 Самара (846)206-03-16 Санкт-Петербург (812)309-46-40 Саратов (845)249-38-78  
Смоленск (4812)29-41-54 Сочи (862)225-72-31 Ставрополь (8652)20-65-13 Тверь (4822)63-31-35  
Томск (3822)98-41-53 Тула (4872)74-02-29 Тюмень (3452)66-21-18 Ульяновск (8422)24-23-59  
Уфа (347)229-48-12 Челябинск (351)202-03-61 Череповец (8202)49-02-64 Ярославль (4852)69-52-93

единый адрес: dbk@nt-rt.ru

# Vehicle Computer

## User's Manual



# Table of Contents

COPYRIGHT .....	4
<i>Battery Disposal</i> .....	4
<i>ANNEX IV</i> .....	4
<b>BEFORE YOU START .....</b>	<b>5</b>
PACKAGE CONTENTS .....	5
COMPONENTS .....	6
<i>Front View</i> .....	6
<i>Back View</i> .....	7
<i>Top View</i> .....	7
<i>Bottom View</i> .....	8
<i>Right View</i> .....	9
<i>Status Indicators</i> .....	10
<b>MANAGING THE POWER.....</b>	<b>11</b>
CONNECTING TO THE CAR BATTERY .....	11
CONNECTING VIA CIGARETTE LIGHTER .....	12
<b>CONNECTING THE EXTERNAL CARDS.....</b>	<b>13</b>
USING THE MEMORY CARDS .....	13
<i>Inserting a Memory Card</i> .....	13
<i>Removing a Memory Card</i> .....	14
USING A SIM CARD.....	14
<i>Inserting a Memory Card</i> .....	14
<b>OPERATING YOUR VEHICLE COMPUTER .....</b>	<b>15</b>
CALIBRATE THE SCREEN .....	15
USING THE QUICK MENU .....	16
CONFIGURING THE SETUP MENU SETTINGS .....	18
<i>Configuring Hotkey</i> .....	18
<i>Configuring Light Sensor Settings</i> .....	20
<i>Configuring Automatic Power Off Setting</i> .....	21
<i>Configuring Automatic Power On Setting</i> .....	22
<i>Viewing the COM Port Voltage</i> .....	23
<i>Warning Information</i> .....	24

<b>CONNECTING TO WIRELESS CONNECTIONS.....</b>	<b>25</b>
USING WWAN .....	25
USING BLUETOOTH .....	26
<b>MOUNTING YOUR VEHICLE COMPUTER .....</b>	<b>28</b>

# Copyright

Copyright© 2013. All rights reserved.

No part of this user manual may be transmitted, stored in a retrieval system, or translated into any language or computer language, in any form or by any means, without the prior written permission of the manufacturer. Information is subject to change without prior notice.

## Battery Disposal

THIS PRODUCT CONTAINS A LITHIUM-ION OR NICKEL-METAL HYDRIDE BATTERY. IT MUST BE DISPOSED OF PROPERLY. CONTACT LOCAL ENVIRONMENTAL AGENCIES FOR INFORMATION ON RECYCLING AND DISPOSAL PLANS IN YOUR AREA.

## *ANNEX IV*

### Symbol for the marking of electrical and electronic equipment

The symbol indicating separate collection for electrical and electronic equipment consists of the crossed-out wheeled bin, as shown below. The symbol must be printed visibly, legibly and indelibly.



## BATTERY SAFETY

DANGER OF EXPLOSION IF BATTERY IS INCORRECTLY REPLACED.  
REPLACE ONLY WITH THE SAME OR EQUIVALENT TYPE RECOMMENDED BY THE MANUFACTURER. DISPOSE OF USED BATTERIES ACCORDING TO THE MANUFACTURER'S INSTRUCTIONS.

# Before You Start

Congratulations on your purchase of this vehicle computer.

This rugged vehicle computer provides users with maximum mobile computing experience in a wide range of working environments. Before you begin using your device, read this chapter to familiarize yourself with the main components installed in the system.

## Package Contents

If any of following items is damaged, please contact your retailer.



Vehicle computer



Power cable with cigarette lighter



Power cable with car battery



External GPS antenna



External WLAN antenna



External LTE antenna



External 3G antenna

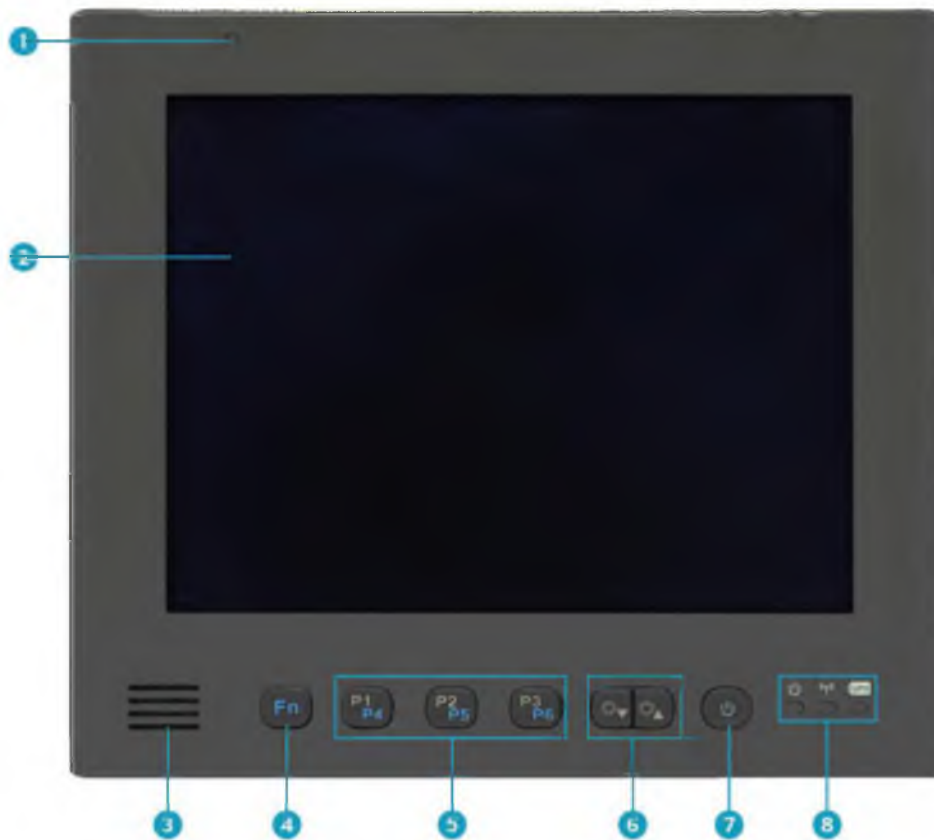


### NOTE

- The pictures are for reference only, actual items may slightly differ.

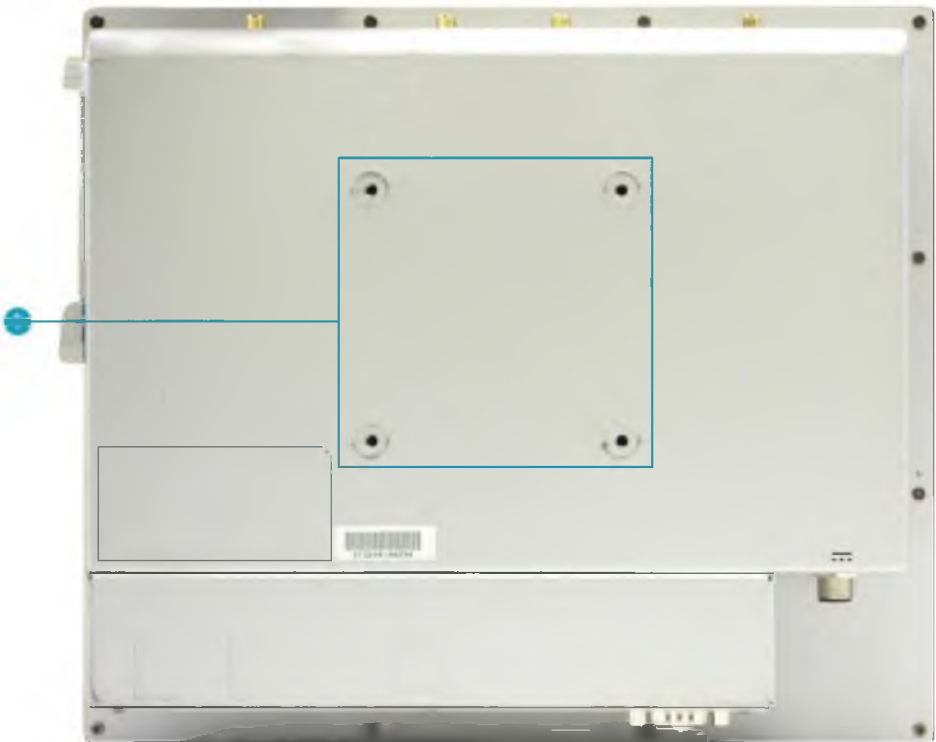
# Components

## Front View



No.	Item	Description
1	Light sensor	Detect the ambient light.
2	Display screen	Allow users to use the Resistive Single Touch.
3	Speaker	Emit sound.
4	Function button	User with other button combinations to perform special functions.
5	Programmable button	Press to enter the chosen program. (user definition).
6	Brightness button	Press to adjust the brightness level.
7	Power button	Press to turn your device on or off.
8	Device Indicators (Power, Wireless, UPS Battery)	Indicate the corresponding function status.

Back View



No.	Item	Description
1	VESA Mount Holes	Use to install the device onto a VESA mount.

Top View

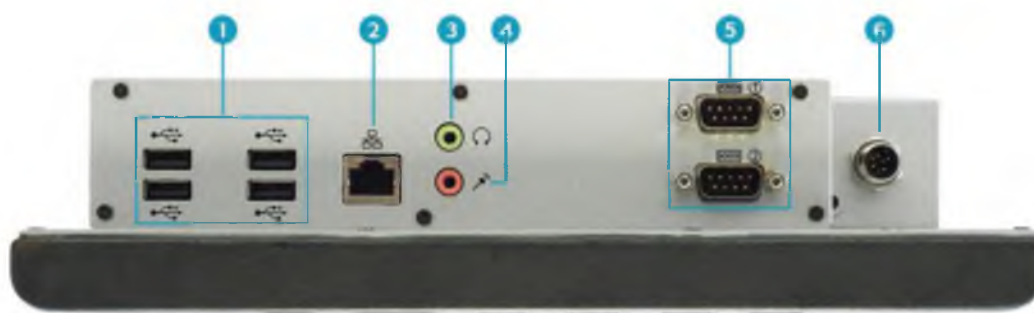


No.	Item	Description
1	External WLAN Antenna connector	Connect the device to an external WLAN antenna.
2	External GPS Antenna connector	Connect the device to an external GPS antenna.
3	External WWAN Antenna connector	Connect the device to an external WWAN antenna.

## Before You Start

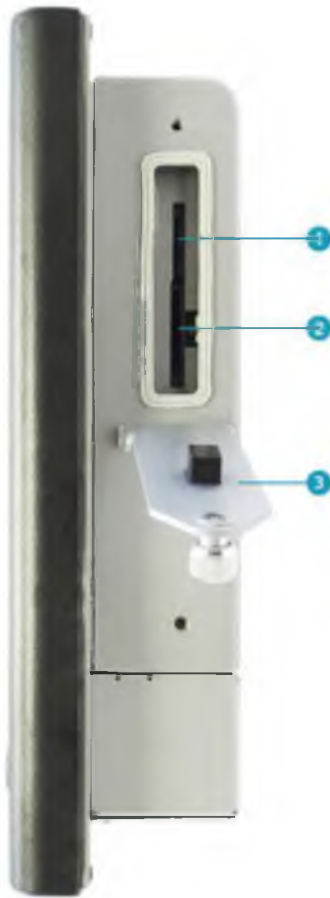
---

### Bottom View



No.	Item	Description
1	USB 2.0 ports (x4)	Connect USB 2.0 peripheral devices.
2	RJ-45 port	Connect to a local area network (LAN) using an Ethernet cable.
3	Earphone jack	Connect headphones or external speakers.
4	Microphone jack	Connect an external microphone.
5	RS-232 port (x2)	Connect serial peripheral devices.
6	Power jack	Connect the power cable.

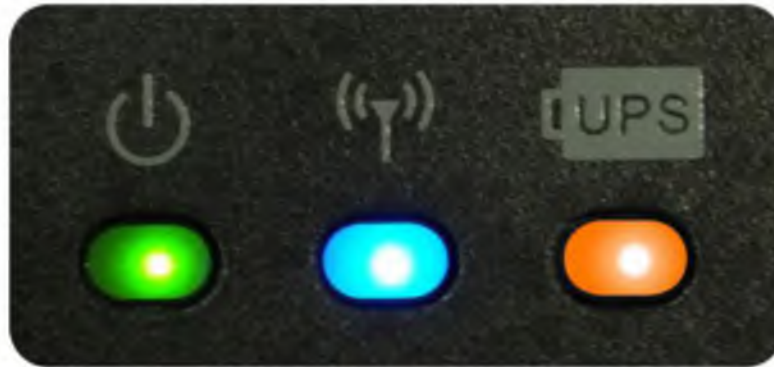





**Right View**

No.	Item	Description
1	SIM Card slot	Use to insert a SIM card for WWAN connection.
2	Card reader	Use to insert memory cards to transfer pictures, music, and data between your device and flash compatible devices. The card reader supports SD (Secure Digital), SDHC, Mini-SD (with adapter).
3	Card cover	Loose the screw to access the card slots.

### Status Indicators

The status indicators in the bottom right corner of the device light up when a particular function of the device is active. Each indicator is marked with a symbol.



Icon	Item	Description
	<b>Power</b>	Indicate the power status: <ul style="list-style-type: none"><li>• Green light means the system is running.</li><li>• Blinking red light means the ambient temperature is out if the operating range (-20~50°C).</li></ul>
	<b>RF</b>	Indicate the status of RF (WLAN, WWAN, Bluetooth, or GPS) communication. The LED always lights on (blue) when the function is enabled.
	<b>UPS Battery</b>	Indicate the UPS battery status: <ul style="list-style-type: none"><li>• Green light means the battery is fully charged.</li><li>• Orange light means the battery is discharged.</li><li>• Blinking red light means the battery power is low.</li></ul>

# Managing the Power

This chapter will guide you on how to connect your device to a power source. This device also equipped with UPS battery. When the UPS battery is fully charged, it can support the power supply for approximately 15 minutes.

## Connecting to the Car Battery

Your device can be powered up using the power cable that is connected to the car battery.



1. Plug one end of the power cable to the power jack of your device. Tighten the bolt to secure the connection.
2. Connect the other end of the power cable to the car battery.  
Be sure to connect the correct wire onto the respective connector of the car battery.
  - **Red:** +
  - **Green:** ACC
  - **Black:** Ground

### CAUTION

- Use only the supplied power cable. Using other power cable may damage the battery or your device.

## Connecting via Cigarette Lighter

Your device can be powered up using the power cable that is connected to the car battery.



1. Plug one end of the power cable to the power jack of your device. Tighten the bolt to secure the connection.
2. Plug the other end of the power cable to the cigarette lighter socket of your car.

### CAUTION

- Use only the supplied power cable. Using other power cable may damage the battery or your device.

# Connecting the External Cards

This chapter will guide you on how to install the memory card and the SIM card.

## Using the Memory Cards

Your device supports different types of memory cards to provide faster data transfer. Supported types are as follows:

- SD card
- SDHC card
- Mini-SD card (with adapter)

### Inserting a Memory Card

1. Loosen the screw and pull to open the card cover.



2. With the label side down, push the memory card into the memory card slot until it clicks into place.



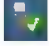
## Connecting the External Cards

---

### Removing a Memory Card

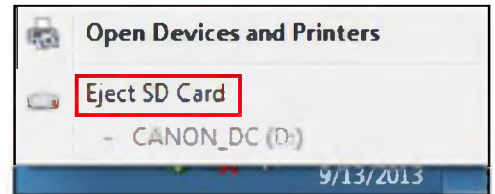
It is important to remove the memory card properly. Improper removal may cause the data in the memory card to be corrupted and your device to malfunction.

To properly remove the memory card, follow the steps below:

1. Tap the removable disk icon (  ) on the system tray.
2. Tap **Eject SD Card**.

The system confirms that the device can be safely removed.

3. Push the memory card to eject it.
4. Pull the card out from the slot.



## Using a SIM Card

You can use a SIM card for wireless internet access.



### NOTE

- Check the availability of service and plan rates of data connection with your network service provider.

### Inserting a Memory Card

1. Loosen the screw and pull to open the card cover.



2. Insert a valid SIM card into the SIM card slot until it clicks into place.



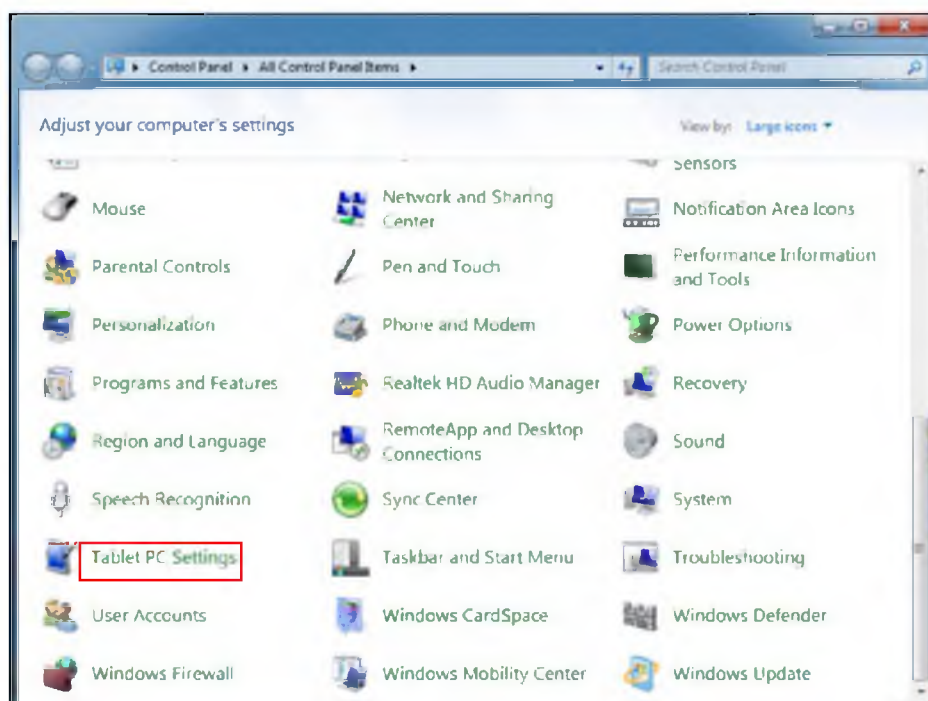
# Operating Your Vehicle Computer

This chapter will guide you on how to use your vehicle computer.

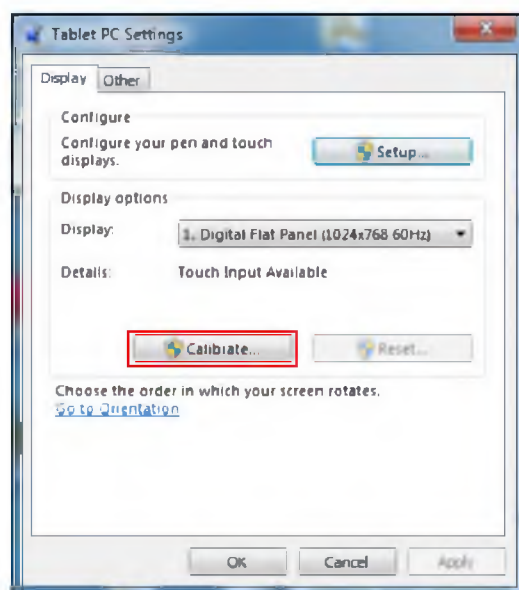
## Calibrate the Screen

To ensure touch accuracy, calibrate the screen.

1. Tap **Start > Control Panel**.
2. Select **Tablet PC Settings**.

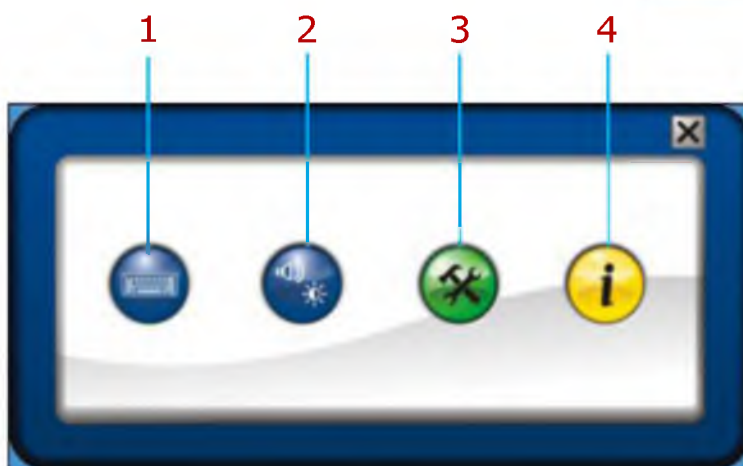
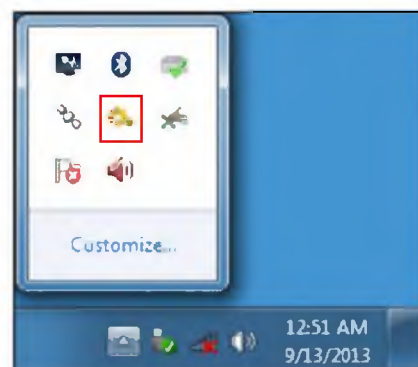



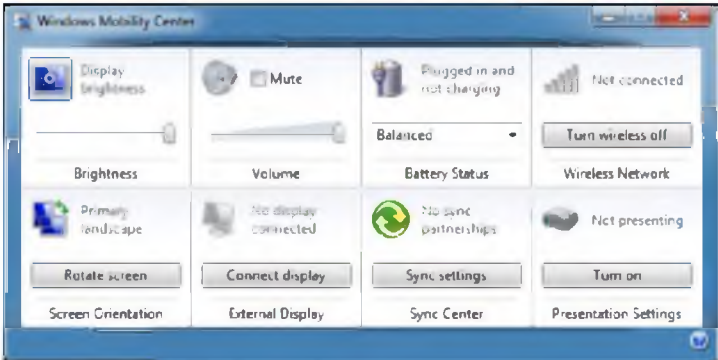
3. On *Display* tab, tap **Calibrate**.
4. Follow the on-screen instructions to complete screen calibration.





# Using the Quick Menu

To enter the Quick menu, tap the arrow on the system tray to display hidden icons. Then tap the Quick Menu icon (⚙️).



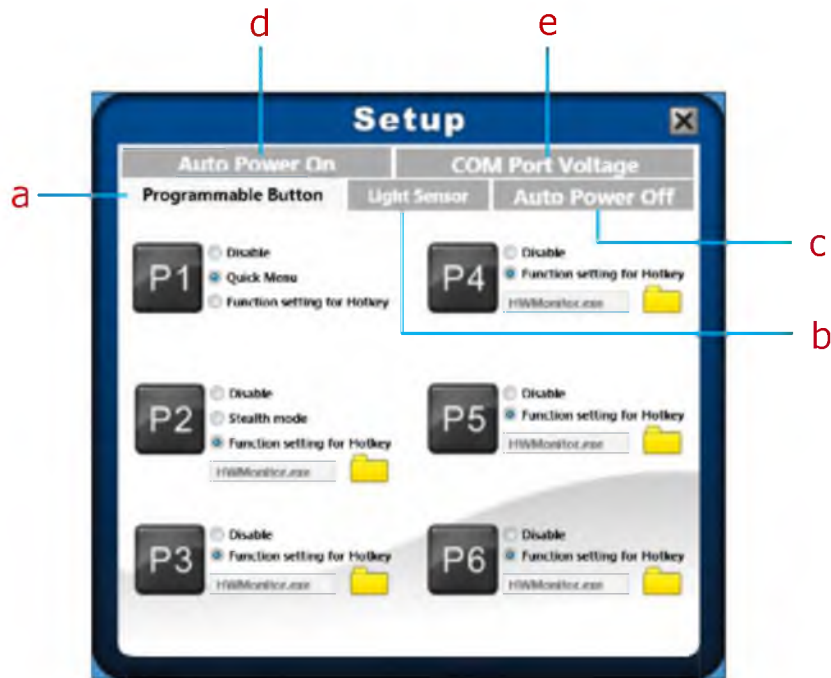
No.	Item	Description
1	Keyboard	Tap the icon to display the on-screen keyboard. 
2	Mobility center	Tap the icon to adjust brightness, screen orientation, volume, external display, battery status, sync, wireless network, and presentation settings. 



No.	Item	Description
3	Setup	<p>Tap the respective tab to set hotkey, light sensor, auto power off, and auto power on settings, and view the COM port voltage usage.</p>  <p>The screenshot shows a 'Setup' window with a blue header and a close button. It features four tabs: 'Auto Power On', 'COM Port Voltage', 'Light Sensor', and 'Auto Power Off'. The 'Auto Power On' tab is active, displaying six programmable buttons (P1-P6). Each button has a 'Disable' radio button and a 'Function setting for Hotkey' radio button. Below each button is a text field containing 'HWMonitor.exe' and a yellow folder icon. Buttons P1, P2, and P3 have a 'Quick Menu' radio button selected. Buttons P4, P5, and P6 have a 'Function setting for Hotkey' radio button selected.</p> <p>For details, refer to "Configuring the SETUP Menu Settings".</p>
4	Information	<p>Tap the icon to view the Bios version, EC version, and Quick Menu version.</p>  <p>The screenshot shows an 'Information Page' window with a blue header and a close button. It displays the following information:         <ul style="list-style-type: none"> <li>Bios Version: A8.01</li> <li>EC Version: 0.00.14</li> <li>Quick Menu Version: 1.13.04021 (Application) and 1.13.04021 (Setup)</li> </ul>         A large yellow information icon is visible on the right side of the page.     </p>

# Configuring the SETUP Menu Settings

In Quick Menu, you can set the following settings via Setup menu:



- a. Programmable Button (Hotkey)
- b. Light Sensor
- c. Auto Power Off
- d. Auto Power On
- e. COM Port Voltage


## Configuring Hotkey

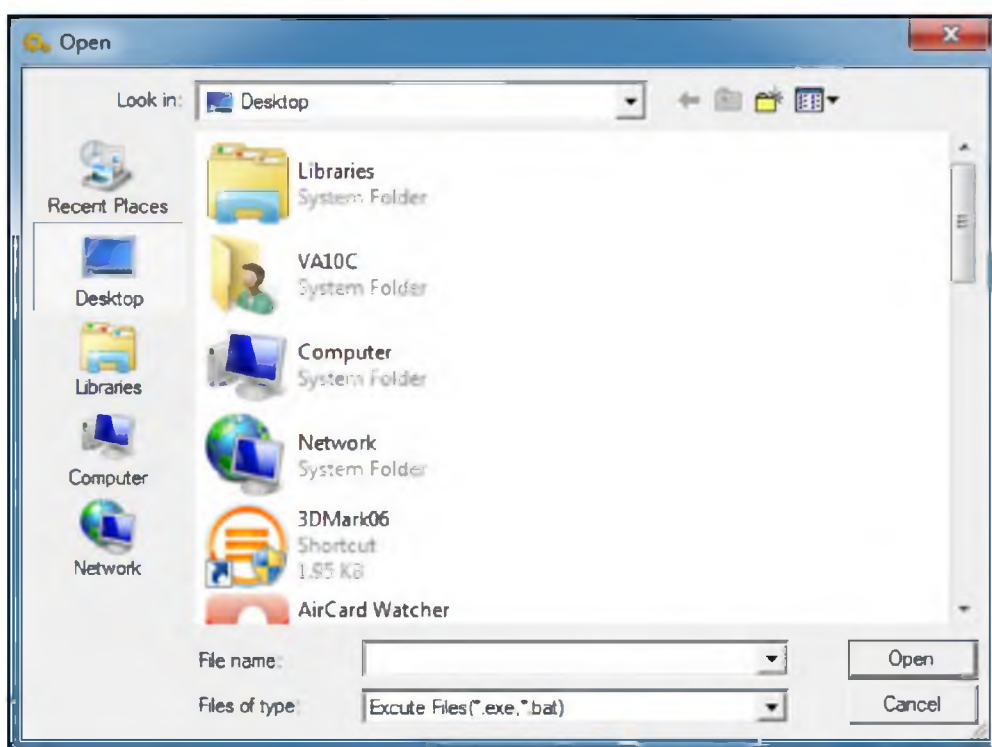
Tap the **Programmable Button** tab to configure the **P1~P6** function buttons.





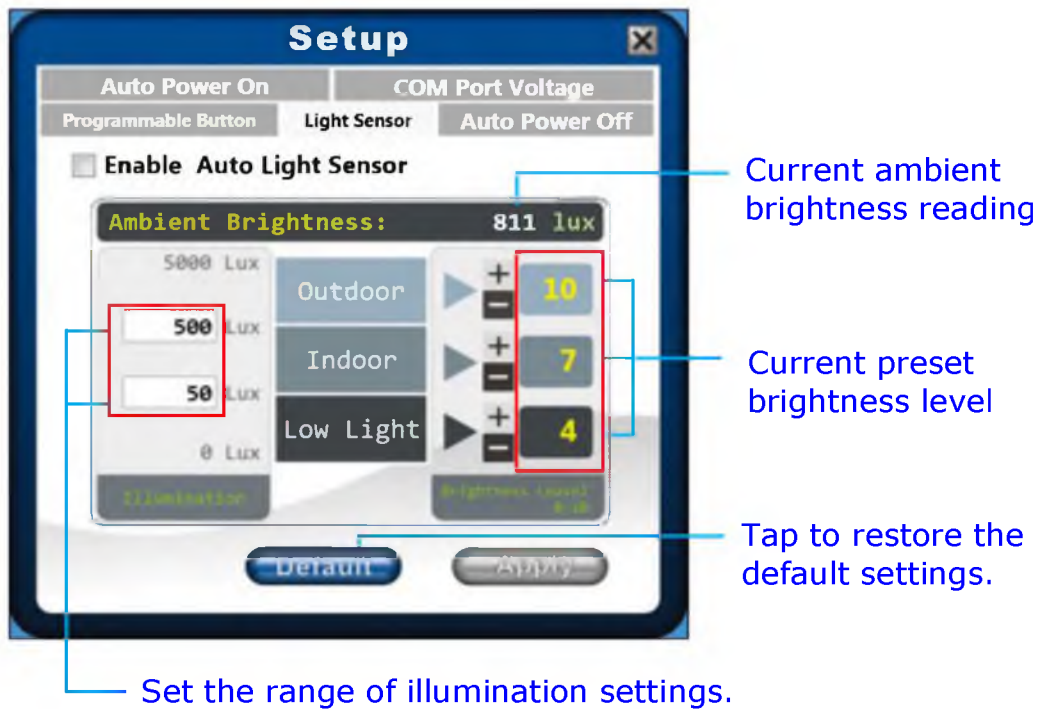
**NOTE**

- By default settings of the **P1~P6** buttons are the following:
  - **P1:** Quick Menu
  - **P2~P6:** Disable.
  
- To assign an application to the **P1~P6** button, do the following:
  - I. Tap **Function setting for Hotkey**.
  - II. Tap the folder icon (  ) to set up an application for the respective **P** button.
  - III. Select the desired application and tap **Open**.



### Configuring Light Sensor Settings

Tap the **Light Sensor** tab to enable/disable the automatic light sensor function, specify and adjust the brightness level.





To setup the light sensor settings, do the following:

- To customize the illumination range according to the ambient lighting, enter the desired value in the first and second data box.

As an example in the above illustration:

- Outdoor (5000 ~ 500 lux)
- Indoor (500 ~ 50 lux)
- Low Light (50 ~ 0 lux).

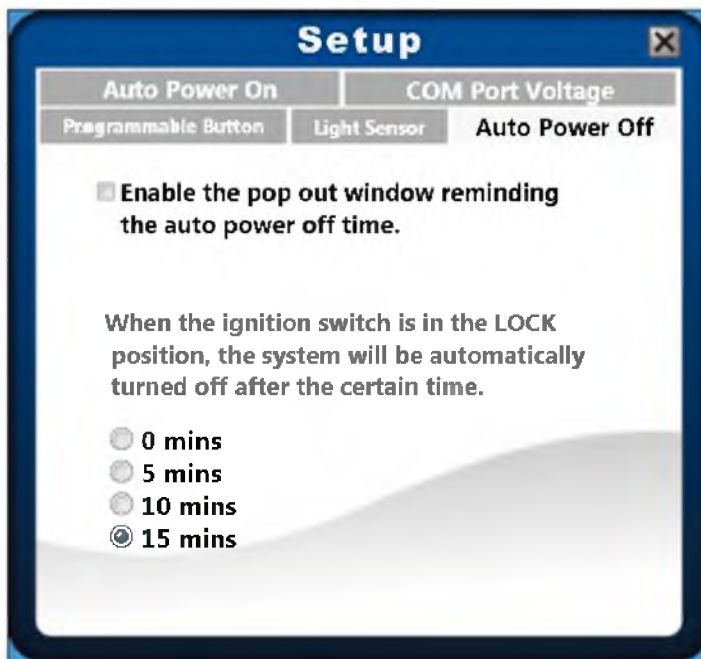
- To adjust the brightness level according to the ambient light, tap  or  to adjust the setting (0~10).
- To save all preset settings, tap **Apply**.
- To enable the automatic light sensor function, tap the **Enable Auto Light Sensor** checkbox.

The system will automatically adjust the LCD brightness according to the preset settings.



### Configuring Automatic Power Off Setting

Tap the **Auto Power Off** tab to adjust delay before the device automatically turns off when the car ignition switch is in the **LOCK** position.



Tap the desired length of time. Your setting is automatically saved.

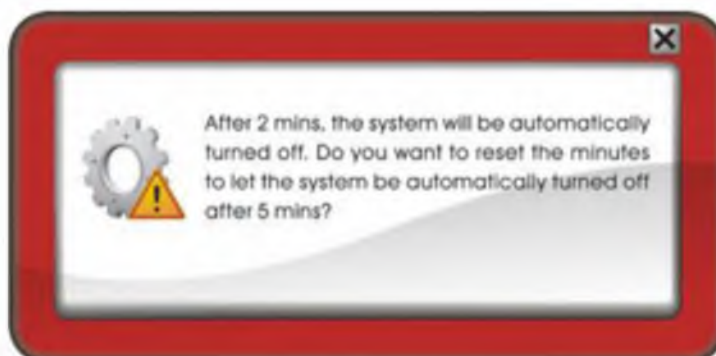


#### NOTE

- During the delay time, the device power supply is supported by the UPS battery.
- In some vehicles, it always supplies power to the device via cigarette lighter connection even when the ignition switch is in the **LOCK** position. In this case, you need to manually turn off the device.

To enable the reminder window to pop out on the screen, tap the **Enable the pop out window reminding the auto power off time** checkbox.

The reminder window appears on the screen 2 minutes before the device will be automatically turned off.



### Configuring Automatic Power On Setting

Tap the **Auto Power On** tab to enable/disable the device to be turned on automatically when the car ignition switch is in the **ACC** or **ON** position.



[**ACC** position]



[**ON** position]



Tap **Enable** to set the device to automatically turn after 3 seconds.

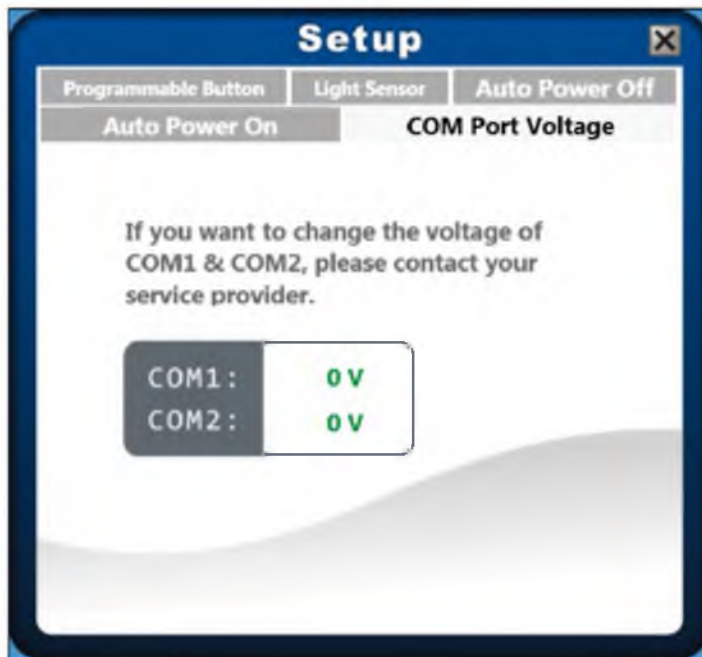


#### NOTE

- By default, the **Auto Power On** function is disabled.
- In some vehicles, it always supplies power to the device via cigarette lighter connection even when the ignition switch is in the **LOCK** position. In this case, do not activate the **Auto Power On** function and turn on the device manually.

### Viewing the COM Port Voltage

Tap the **COM Port Voltage** tab to view the voltage of COM1 and COM2 information.



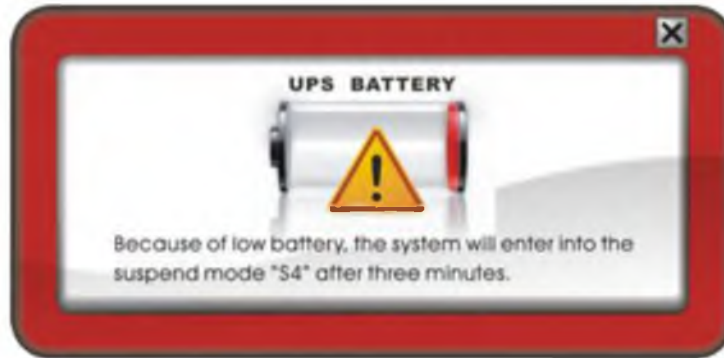
#### NOTE

- The voltage data can only set using jumpers. Contact your service provider if you want to change the COM port voltage settings.

# Warning Information

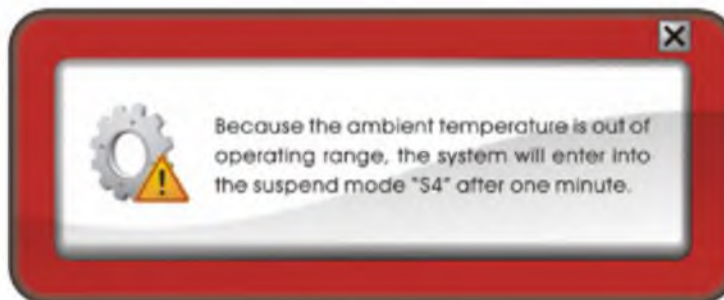
A warning message will appear on the screen when one of the following events occurs:

**a. When the battery is low:**



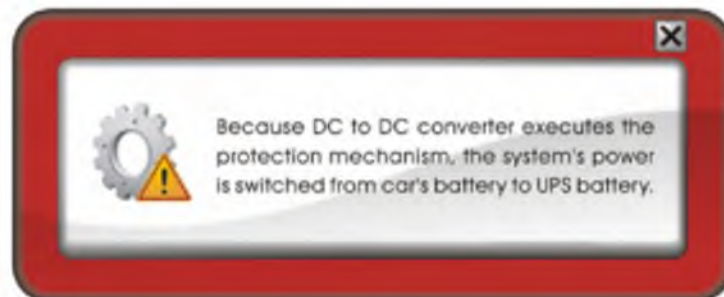
The system will automatically enter into Suspend mode after three minutes.

**b. When the ambient temperature is out of operating range:**



The system will automatically enter into the Suspend mode after one minute.

**c. When the DC to DC converter executes the protection mechanism (OVP(Over Voltage Process), OCP(Over Current Process), or UVP(Under Voltage Process)):**



The system power will automatically switch from the car battery to UPS battery. The UPS battery power is only last for 15 minutes (max.).




# Connecting to Wireless Connections

You can connect your device via a wireless connection either using WWAN or Bluetooth.

## Using WWAN

With **WWAN** function, it allows your device to connect to the Internet using mobile or cellular data networks. By default, the WWAN function is automatically activated every time the device is turned on.

To connect to a mobile network, follow the steps below:

1. Insert a valid SIM card into the SIM card slot.
2. Launch **AirCard Watcher** application.
  - On Windows desktop, tap "AirCard Watcher" (  ).
  - Tap **Start** > **AirCard Watcher**.
3. Tap **Connect** to enable the Internet connection via mobile data network.

4. To disconnect the connection, tap **Disconnect**.



### NOTE

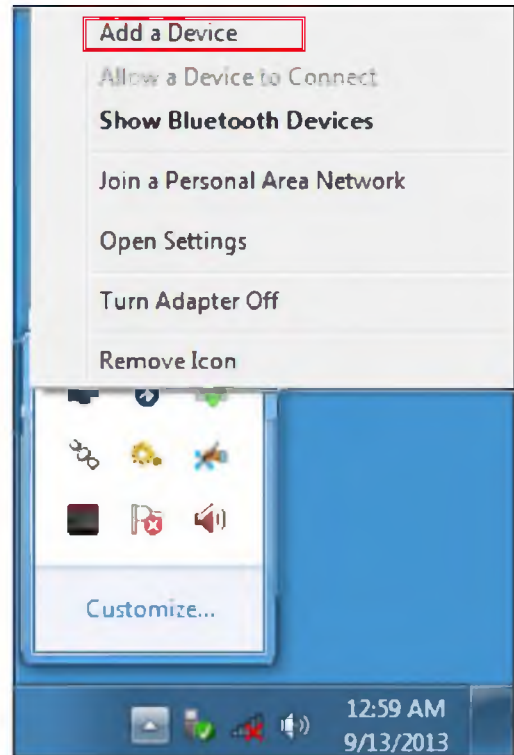
- Turn off the device before you insert the SIM card.

# Using Bluetooth

Your device can connect and communicate with other Bluetooth-enabled devices. By default, the Bluetooth function is automatically activated every time the device is turned on.

To add a device, follow the steps below:

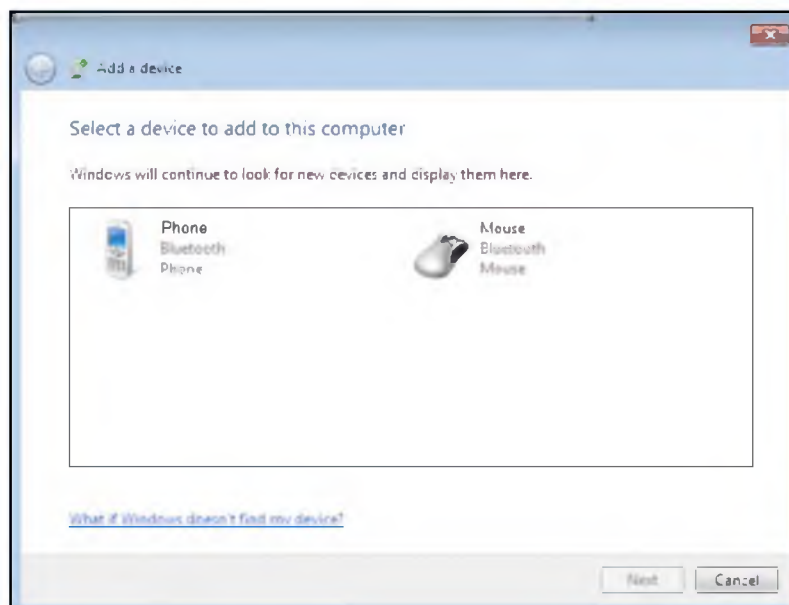
1. Tap the arrow on the system tray to display hidden icons.
2. Tap the Bluetooth icon (📶).
3. Tap **Add a Device**. The system starts scanning for Bluetooth devices and displays the available devices.



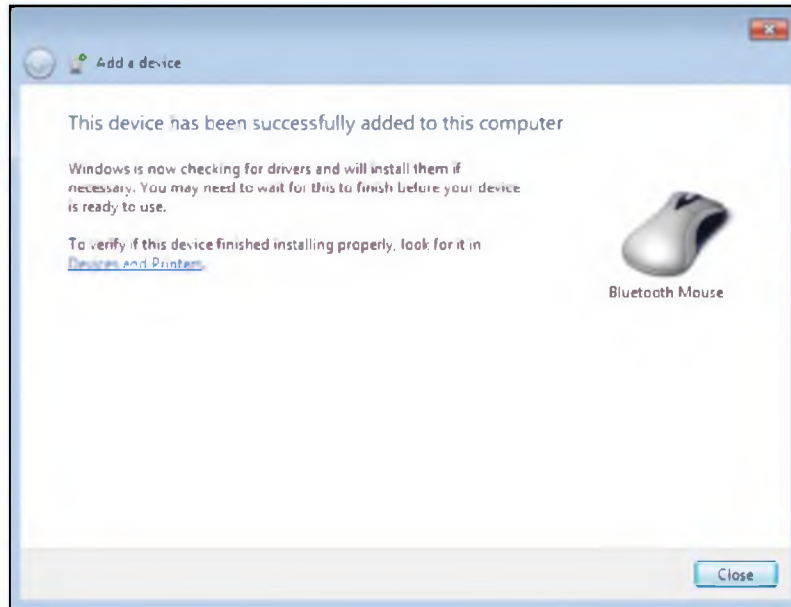
## NOTE

- If the device that you want to add does not appear on the screen, please check if the device is turned on and discoverable.

4. Tap on a device, then tap **Next** to continue.



5. Tap **Close** to complete the pairing connection.

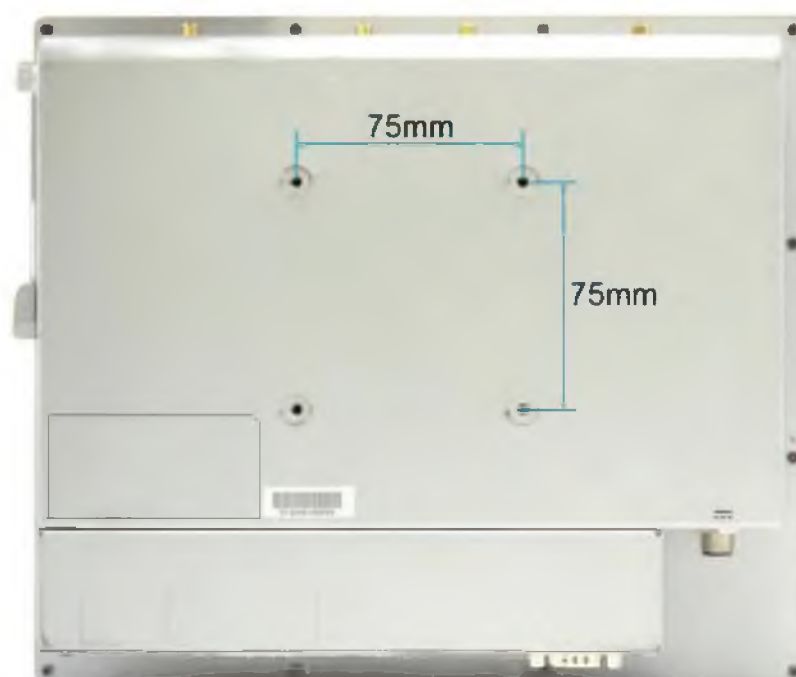


### NOTE

- Most Bluetooth-enabled devices need to be paired with your device. The PIN you enter on the device must be the same PIN to be entered on the other Bluetooth device.
- Once a partnership has been created, connecting to that device again will no longer require entering the PIN.

# Mounting Your Vehicle Computer

The device can be mounted on a standard 75 x75mm VESA mount.



Align the mounting base holes with the four pre-drilled mount holes at the back of the device, and then secure with the mounting screws.



## NOTE

- The screw hole diameter is 8.5mm.
- For more information on installing the mount, refer the instructions included with mount kits.

по вопросам продаж и поддержки обращайтесь:

Архангельск (8182)63-90-72 Астана +7(7172)727-132 Белгород (4722)40-23-64 Брянск (4832)59-03-52  
Владивосток (423)249-28-31 Волгоград (844)278-03-48 Вологда (8172)26-41-59 Воронеж (473)204-51-73  
Екатеринбург (343)384-55-89 Иваново (4932)77-34-06 Ижевск (3412)26-03-58 Казань (843)206-01-48  
Калининград (4012)72-03-81 Калуга (4842)92-23-67 Кемерово (3842)65-04-62 Киров (8332)68-02-04  
Краснодар (861)203-40-90 Красноярск (391)204-63-61 Курск (4712)77-13-04 Липецк (4742)52-20-81  
Магнитогорск (3519)55-03-13 Москва (495)268-04-70 Мурманск (8152)59-64-93 Набережные Челны (8552)20-53-41  
Нижний Новгород (831)429-08-12 Новокузнецк (3843)20-46-81 Новосибирск (383)227-86-73 Орел (4862)44-53-42  
Оренбург (3532)37-68-04 Пенза (8412)22-31-16 Пермь (342)205-81-47 Ростов-на-Дону (863)308-18-15  
Рязань (4912)46-61-64 Самара (846)206-03-16 Санкт-Петербург (812)309-46-40 Саратов (845)249-38-78  
Смоленск (4812)29-41-54 Сочи (862)225-72-31 Ставрополь (8652)20-65-13 Тверь (4822)63-31-35  
Томск (3822)98-41-53 Тула (4872)74-02-29 Тюмень (3452)66-21-18 Ульяновск (8422)24-23-59  
Уфа (347)229-48-12 Челябинск (351)202-03-61 Череповец (8202)49-02-64 Ярославль (4852)69-52-93

единый адрес: [dbk@nt-rt.ru](mailto:dbk@nt-rt.ru)